

LV Series

Low Velocity Evaporator

Hot Gas



Model LVG unit coolers are ideal for supermarket walk-in coolers, meat preparation and cutting rooms. They are particularly suited for coolers where products are stored requiring high relative humidities.

Whisper quiet, they evenly distribute air in large areas with velocities not much greater than gravity circulation. Because the air velocity is low there are no uncomfortable drafts and personal comfort is maintained.

Their low-silhouette, compact design permits mounting flush to the ceiling or between rail beams. Their length assures even distribution of air throughout the refrigerated area.

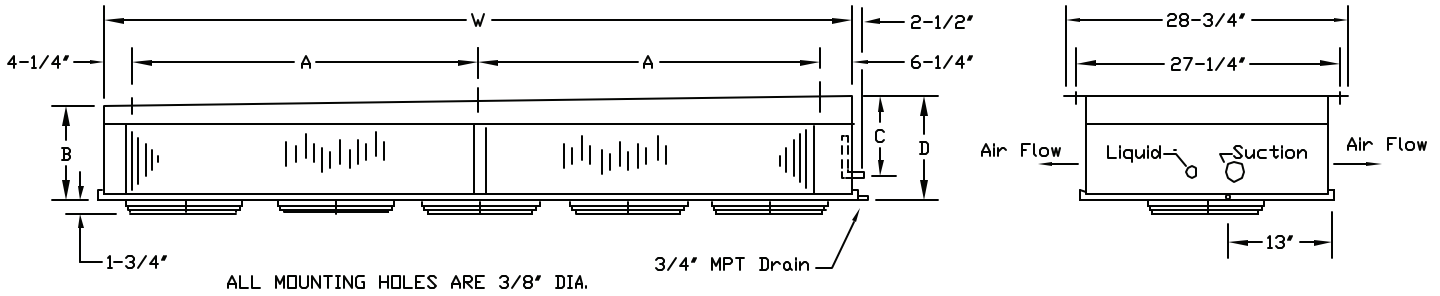


Features:

- Low air velocity.
- Low unit height.
- Corrosion resistant Aluminum cabinet.
- Coils constructed of Copper tubes and Aluminum fin.
- Baked white housing available as an option.
- All motors are permanently lubricated with built-in overload protection.
- UL and C-UL listed.
- NSF approved.
- Sloped drain pan built-in for positive condensate drainage.
- Factory wired for quick field installation.
- Hinged drain pan for quick easy access.



LVG Low Velocity Evaporator



- NOTES - ALL DIMENSIONS ARE IN INCHES.
- MODEL LVG-65 HAS 4 MOUNTING HOLES.
 - MODELS LVG-105 THRU LVG-275 HAVE 6 MOUNTING HOLES.
 - MODEL LVG-371 HAS 8 MOUNTING HOLES.
 - THE HOT GAS LINE ENTERS THE PIPING COMPARTMENT JUST BELOW THE LIQUID LINE FOR FIELD CONNECTION TO THE UNIT.

Performance Data

MODEL	CAPACITY BTU/HR (1)		CFM	QTY	MOTOR AMPS					
	10°F TD	20°F TD			SP MOTOR		PSC MOTOR		EC MOTOR	
					115V	230/1	115V	230/1	115V	230/1
LVG-65*	6,500	13,000	1050	2	1.2	0.6	1.0	0.6	1.16	0.58
LVG-105*	10,500	21,000	1220	3	1.8	0.9	1.5	0.9	1.74	0.87
LVG-140*	14,000	28,000	1670	3	3.3	1.65	1.5	0.9	1.74	0.87
LVG-150*	15,000	30,000	1820	3	3.3	1.65	1.5	0.9	1.74	0.87
LVG-180*	18,000	36,000	2230	4	4.4	2.2	2.0	1.2	2.32	1.16
LVG-215*	21,500	43,000	2420	4	4.4	2.2	2.0	1.2	2.32	1.16
LVG-275*	27,500	55,000	2420	4	4.4	2.2	2.0	1.2	2.32	1.16
LVG-371	37,100	74,200	2830	5	5.5	3.3	2.5	1.5	2.90	1.45

P = Shaded Pole motor(s), PSC = Permanent Split Capacitor motor(s), EC = Electronically Commutated motor(s).

* For Thermobank II application, add a "T" to the model number suffix.
For Reverse Cycle application, add a "R" to the model number suffix.

Dimensional Data

MODEL	Connections (in)										Refrig. Charge (lbs) (1)	Approx. Ship Weight (lbs)
	Suction O.D.	Liquid FN	Ext. Equal O.D.	Hot Gas O.D.	Drain MPT	A (3)	B	C	D	W		
LVG-65*	7/8	1/2	1/4	5/8	3/4	48	7-1/2	6-1/4	8-3/8	58-1/3	5.3	155
LVG-105*	7/8	1/2	1/4	5/8	3/4	36	7-1/2	6-1/4	9	82-1/2	7.8	205
LVG-140*	1-1/8	1/2	1/4	5/8	3/4	36	10-1/2	9-3/4	12	82-1/2	11.7	265
LVG-150*	1-1/8	1/2	1/4	5/8	3/4	36	10-1/2	9-3/4	12	82-1/2	11.7	285
LVG-180*	1-1/8	1/2	1/4	5/8	3/4	48	10-1/2	9-3/4	12	106-1/2	15.4	325
LVG-215*	1-1/8	1/2	1/4	5/8	3/4	48	10-1/2	9-3/4	12	106-1/2	15.4	340
LVG-275*	1-1/8	1/2	1/4	5/8	3/4	48	13-1/2	12-3/4	15	106-1/2	20.6	370
LVG-371*	1-1/8	1/2	1/4	5/8	3/4	40	13-1/2	12-3/4	15	130-1/2	32.2	490

1. Based on R-22.
2. LVG-65 has 4 mounting holes, LVG-105 thru LVG-275 have 6 mounting holes, and LVG-371 has 8 mounting holes.

Specifications and dimensions are subject to change without notice.